

For Research Use Only.
Not For Use In Diagnostics.

HRP-conjugated IgG Fraction Monoclonal Mouse Anti-Rabbit IgG, Light Chain Specific



Catalog Number: SA00001-7L

Information

Catalog Number:	SA00001-7L	Reactivity:	Rabbit
Host:	Mouse	Physical State:	Liquid
Applications:	ELISA, WB, Dot blot	Conjugation:	HRP

Recommended Dilutions

1:4000-1:10000 for western blotting with ECL substrates
1:2000-1:50000 for ELISA and Western blotting with chromogenic substrates

Stabilizer

3 mg/ml BSA

Safety Notes

This product is for research use only, not for diagnostic or therapeutic use.

Storage

Storage:
Store at -20°C. Stable for one year after shipment.
Storage Buffer:
0.01 M Sodium phosphate, 0.25 M NaCl, 50% glycerol, 3 mg/ml BSA, pH 7.6.
Aliquoting is unnecessary for -20°C storage

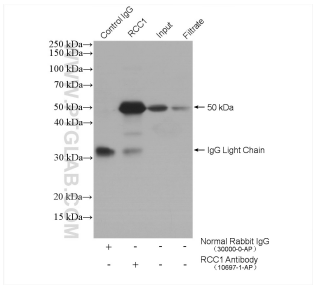
Purity

The antibody was purified from antisera by immunoaffinity chromatography using antigens coupled to agarose beads.

For technical support and original validation data for this product please
contact:
T: 4006900926 E: Proteintech-CN@ptglab.com W: ptgcn.com

This product is exclusively available under Proteintech
Group brand and is not available to purchase from any
other manufacturer.

Selected Validation Data



IP result of anti-RCC1 (IP:10697-1-AP, 4ug;
Detection:10697-1-AP 1:500) with HeLa cells lysate
1600 ug. SA00001-7L (HRP-Mouse Anti-Rabbit IgG
Light Chain Specific) as secondary antibody.