

Human CD8 Memory T Cell Isolation Kit

Catalog Number:KMS307

Description

Memory T cells are antigen-exposed T lymphocytes which would mediate fast and robust response upon repeat encounter with antigen. Human CD8 Memory T Cell Isolation kit is designed to isolate untouched CD8+ memory T lymphocytes which contains a biotin labeled antibody cocktail and streptavidin conjugated magnetic beads. Through incubation of samples with biotin antibody cocktail followed by incubation of streptavidin beads, the magnetically labeled non CD8+ memory cells will be retained in the tube by magnetic separator. The untouched CD8+ T memory cells are collected in supernatant. Any downstream application can be performed on CD8+ memory cells after separation, such as Flow Cytometry and in vitro culture.

Components

KMS307-10:

- MS307A-10: 300 µL Human CD8 Isolation Biotin Antibody Cocktail (CD4, CD19, CD14, CD56, CD45RA, CD20, CD11b, CD16, CD36, CD235a, CD123, TCR $\gamma\delta$)

- MS307B-10: 300µL streptavidin magnetic beads

KMS307-100:

- MS307A-100: 3mL Human CD8 Isolation Biotin Antibody Cocktail (CD4, CD19, CD14, CD56, CD45RA, CD20, 11b, CD16, CD36, CD235a, CD123, TCR $\gamma\delta$)

- MS307B-100: 3mL streptavidin magnetic beads

Package

10test/100test

Storage

2-8°C

Storage buffer

PBS, pH7.4, 0.2% BSA and 0.05% Sodium Azide

Reactivity

Human

Beads diameter

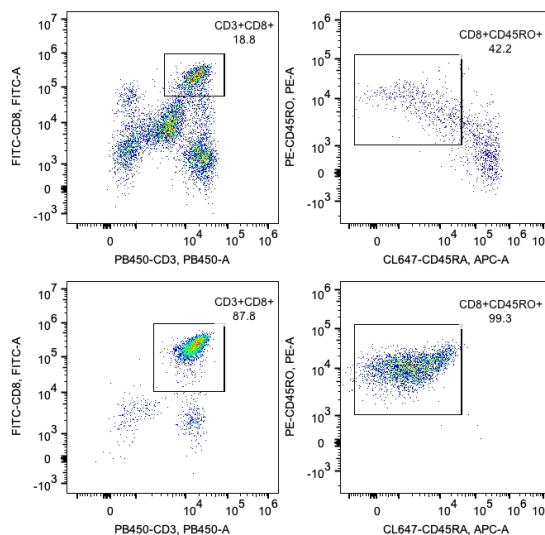
2.7 µm

Recommend usage

30µL biotin labeled antibody cocktail and 30µL streptavidin beads for 1×10^7 PBMCs

Results

Representative example of enrichment



Following cell separation, cell suspension was stained with PB450-CD3 (UCHT1), FITC-CD8 (OKT8), PE-CD45RO (UCHL1) and CL647-CD45RA (HI100) antibodies. All viable cells are gated in the analysis. Left upper panel: CD3+CD8+ cells before selection; right upper panel: CD45RO+ cells within CD8+ cells. Left lower panel: CD3+CD8+ cells after selection; right lower panel: CD45RO+ cells within CD8+ cells. Human CD8 memory T cell isolation kit is tested using PBMC from three donors.

For technical support and original validation data for this product please contact:

T: 027-87531629 E: Proteintech-CN@ptglab.com W: ptgcn.com

This product is exclusively available under Proteintech Group brand and is not available to purchase from any other manufacturer.