

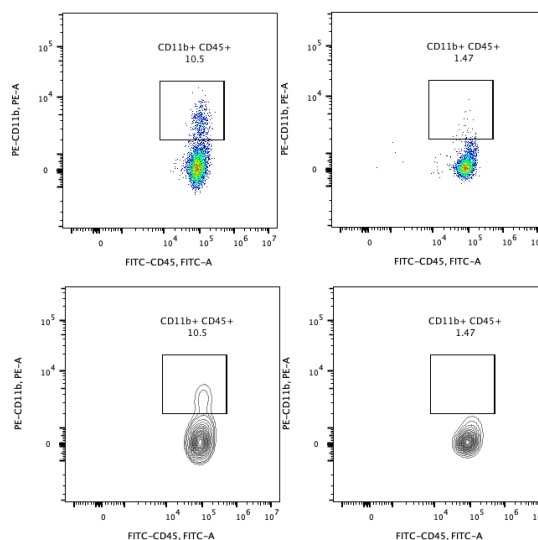
# Human CD11b Magnetic Beads

Catalog Number: MS008

<b>Description</b>	CD11b is the $\alpha$ -chain of integrin receptor CD11b/CD18 (also known as $\alpha$ M $\beta$ 2, Mac-1, and CR3), is highly expressed on the surface of innate immune cells, including macrophages, neutrophils, eosinophils and basophils. Human CD11b Magnetic Beads Kit is used for isolation or depletion of human CD11b myeloid lineage cells from PBMC, whole blood, or other sample types. CD11b positive cells and negative cells could be separated after short incubation with Human CD11b Magnetic Beads on a magnet. CD11b positive cells remain attached to magnetic beads after separation and can be used for further molecular analysis or in vitro culture, but not suitable for flow cytometry analysis. CD11b negative cells remain in the supernatant and can be used also.
<b>Components</b>	MS008-10: 100 $\mu$ L 10 mg/mL human CD11b magnetic beads MS008-100: 1 mL 10 mg/mL human CD11b magnetic beads
<b>Package</b>	10 test/100 test
<b>Storage</b>	2-8°C
<b>Storage buffer</b>	PBS, pH7.4, 0.2% BSA and 0.05% Sodium Azide
<b>Reactivity</b>	Human
<b>Recommend usage</b>	10 $\mu$ L Human CD11b Magnetic Beads for $1 \times 10^7$ cells
<b>Beads Diameter</b>	2.7 $\mu$ m

## Results

Representative example of depletion



Following cell separation, cell suspension was stained with FITC-CD45(F10-89-4) and PE-CD11b(ICRF44) antibodies. All viable cells are gated in the analysis. Left panel: CD11b+CD45+ cells before selection. Right panel: CD11b+CD45+ cells after depletion. Human CD11b magnetic beads are tested using PBMC from three donors.

For technical support and original validation data for this product please contact:

T: 027-87531629 E: Proteintech-CN@ptglab.com W: ptgcn.com

This product is exclusively available under Proteintech Group brand and is not available to purchase from any other manufacturer.