

For Research Use Only

# SUMO1-Trap Agarose



[www.ptgcn.com](http://www.ptgcn.com)

Catalog Number: **s1ta**

## Basic Information

**Catalog Number:**  
s1ta

**Applications:**  
IP, Co-IP

**Conjugate:**  
Agarose beads; ~90 um (cross-linked 4% agarose beads)

**Host:**  
Alpaca

**Type:**  
Nanobody

**Class:**  
Recombinant

## Description

The ChromoTek SUMO1-Trap Agarose consists of an anti-SUMO1 VHH, which is coupled to agarose beads. It can be used for the immunoprecipitation of SUMO1 proteins from cell extracts of various organisms.

## Specificity/Target

Binds specifically to human SUMO1 (Small Ubiquitin-Like Modifier 1). The ChromoTek SUMO1-Trap Agarose will immunoprecipitate both monovalent SUMO1 and SUMO1 chains formed by the process of SUMOylation. In addition to human SUMO1, it will also bind SUMO1 homologs from other mammals.

## Elution buffer

2x SDS-sample buffer (Lämmli), 200 mM glycine pH 2.5

## Affinity ( $K_D$ )

/

## Storage

**Storage:**  
Shipped at ambient temperature. Upon receipt store at +4°C. Stable for one year. Do not freeze!  
**Storage Buffer:**  
20% ethanol

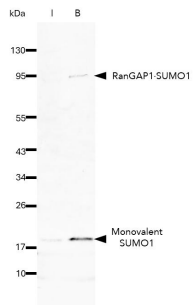
For technical support and original validation data for this product please contact:

T: 4006900926

E: [Proteintech-CN@ptglab.com](mailto:Proteintech-CN@ptglab.com)  
W: [www.ptgcn.com](http://www.ptgcn.com)

This product is exclusively available under Proteintech Group brand and is not available to purchase from any other manufacturer.

## Selected Validation Data



The SUMO1-Trap Agarose (s1ta) was used to immunoprecipitate endogenous SUMO1 and SUMO1ylated proteins from HEK293T cells. Samples of the input lysate (I), and bound (B) fraction were analyzed by Western blot using 10329-1-AP (SUMO1 Polyclonal Antibody). SUMO1 and the commonly SUMO1ylated protein RanGAP1 are highly enriched using the SUMO1-Trap.